

Suffolk Park Chatter

for Baywood Chase, Byron Hills, Beachside

(Published by the Suffolk Park Progress Association)

SPPA formed in 1959



Local news and events hot off the press for residents and business

Web: suffolkparkprogressassociation.org

Email: sppa.secretary@gmail.com

Post: PO Box 99 Suffolk Park NSW 2481

Important Announcements:

Christmas Party and AGM

Join the Suffolk Park community for Christmas drinks, an update on current activities and a lightning fast AGM.

7pm - 9pm Tuesday, November 27th at the Suffolk Park Community Hall. All welcome.

Best regards,

the SPPA committee

Enquiries: sppa.secretary@gmail.com

What's on in Suffolk Park

³⁵₁₇ Notice of upcoming events is displayed on the window of the Community Hall.

Contact Margaret; 0429 466 260

³⁵₁₇ Dunecare meets first Saturday of the month at 8.30am co ordinator Helen Brown 6685 4964

³⁵₁₇ **Volunteers needed for the Suffolk Park Cleanup Day, 25th November 2012. Please contact Barrie Peters 66853980 for meeting places and start time**

From our president

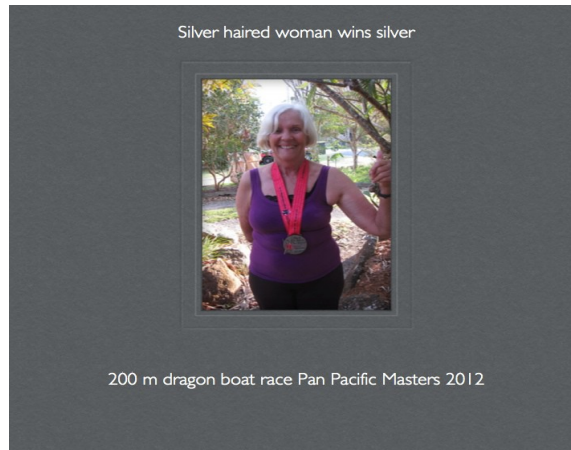
Email: sppa.secretary@gmail.com

Issue No 3

We look forward to seeing work start on our benches, shade structures, water bubbler, trees and changeroom facilities for the sportsfield/skatepark in 2013. The upgrade will make the whole area more usable for young and old, especially during summer. The SPPA has had several meetings with council staff over the past months, and we expect that the 6 December council meeting will approve the first tender for the work.

The SPPA wants to build a community garden on the vacant land on Beech Drive next to 'Baz and Shaz' and in front of the sportsfield/skatepark. The land is owned by the Dept of Education and we are working with Council for Council to lease that land.

Congratulations to Suffolk Park's Champion Annabelle Sinclair



Some history of our Suffolk Park area



Baywood Chase before the roads and houses



Sandmining at Tallow Beach



Tallow Beach from the lighthouse

And, going back in time a bit further, see the article in the Courier Mail from 1941, announcing a gold find near Byron Bay. You can find the article on > <http://trove.nla.gov.au/ndp/del/printArticleJpg/44897841/3?print=n>

The Courier-Mail (Brisbane, Qld. : 1930s) **Thousands Of Acres**

GOLD RUSH ON AT BYRON BAY

LISMORE, Friday.—Byron Bay is the centre of one of the biggest gold rushes in the history of the North Coast since the discovery of gold at Drake many years ago.

The discovery of rich gold-bearing material in a bucket drawn from a hole being sunk for a well near the Byron Bay meatworks this week has been responsible for a rush of applications for authority to enter properties extending from Byron Bay to Brunswick Heads. Part of the country is swampy land running parallel with the ocean north of Byron Bay for eight miles.

To date 340 applications have been lodged with the warden's clerk at Mullumbimby, and the District Warden (Mr. J. McElroy) will hold special sittings of the court to deal with them.

Each applicant is entitled to apply to an authority to enter 25 acres, but not all of the applications applied for the maximum. The estate covers several thousands of acres of land.

The 340 applications now in the warden's clerk office, and more are being filed before the court sits on Monday are 280 more than the total filed previously in Mullumbimby, which is one of the oldest towns in the Diamond River district.

Gold has been won from the sea at the beach at Byron Bay and at Broken Head in payable quantities for years, but the assay of samples obtained recently from the beach is believed to be the best obtained any time in the coastal areas.

National Library of Australia

So, watch out for those yellow grains in the sand

Join the Suffolk Park Progress Association;

Membership fees:

Family / Couple \$15

Single \$10

Pensioner \$5

Email: sppa.secretary@gmail.com

Issue No 3

November 2012